



An annual update on the Charitable Organization Endowment (COE) Program

COE Program Report

OKLAHOMA CITY COMMUNITY FOUNDATION | FALL 2010



Thanks to its COE fund, the Chesapeake Swim Club is able to offer free swim lessons to children who cannot afford to participate.

Preparing for the Future Through Endowment

The Oklahoma City Community Foundation administers the country's largest Charitable Organization Endowment (COE) Program, which currently includes 300 organizations who rely on their endowments to meet their needs and serve the community. Many of these organizations understand the power of endowment and take an active role in helping to build their funds.

Nonprofit organizations participating in the COE Program are encouraged to promote their endowments to their donors as a giving option. In addition, the Kirkpatrick Family Fund offers a COE matching grant program to help the nonprofits increase their endowments.

"Endowment represents an enduring investment in an organization's future," says Liz Eickman, director of the Kirkpatrick Family Fund. "We are delighted to support the many central Oklahoma nonprofits that take advantage of our matching grant program."

Following are examples of how three volunteer-driven COE organizations work to increase their endowments.

Providing Opportunities to Swim

Founded in 1956, the Chesapeake Swim Club offers a competitive swimming program and professional training for young people of all ages and ability levels. The group established their endowment at the Oklahoma City Community Foundation in 1988 with the intent to use the annual distribution to sponsor lower-income youth in the program. They have regularly participated in the Kirkpatrick Family Fund matching grant program, as well as the John Kirkpatrick Centennial Challenge in 2008, earning matching dollars for individual contributions to their endowment.

Today they use part of their annual distribution to help fund OKSWIM, a program to provide swimming lessons to socially and economically challenged children.

"The matching programs provide a great opportunity to help grow our endowment," says John Brown, head coach and chief executive officer. "Our goal is to utilize our annual distribution to give back to the community by providing swimming programs to families who would not otherwise be able to participate."

Continued on page 2

Contents

COE Program & Services 7 | Support These Organizations 8 | Consider a Planned Gift 9 | Our Investment & Distribution Policies 10



Continued from page 1

Encouraging Students to Read

The Friends of the Mustang Public Library is a nonprofit organization created in 2002 by a group of Mustang citizens to help support their local library. They established a COE fund in 2006 and use their annual distribution to help offset the cost of the library's summer reading program. Through their participation in the Kirkpatrick Family Fund matching grant program and by encouraging individual gifts, the organization hopes to one day be able to completely support the summer program and continue to provide students with this important service.

"We are dedicated to growing our endowment until it will cover the entire cost of the program," says Carolyn Klepper, president of organization. "While the Friends of the Mustang Library might not always be around, the endowment will always be there. That's the importance of endowment."

Preserving a Neighborhood

In 1973, a group of residents joined together to form the Crown Heights-Edgemere Heights Homeowners Association in an effort to preserve and enhance the character of their historic neighborhood. The organization maintains landscaping and historical lighting throughout the neighborhood, as well as organizing community events for the residents. The group established their endowment fund in 1994 to provide a permanent source of support for maintenance of the neighborhood, which is located between Northwest 42nd and Northwest 36th streets and North Western Avenue and North Harvey Parkway.

In addition to participating in matching grant programs, the group also regularly reinvests their annual distribution back into their endowment. "The beautiful neighborhood we see today is the result of years of hard work and volunteer efforts," says association president Suzanne Bockus. "Through our endowment we are able to look to the future and ensure that our neighborhood will be in good hands for future generations."

Top: For the past several years, the Friends of Mustang Library have paid for the programming during the library's Summer Arts Festival. Children's musician Stephen Fite entertained during the 2010 festival.
Bottom: The Crown Heights-Edgemere Heights Homeowners Association is building its COE fund to help preserve and maintain the appearance of the historic neighborhood.



Charitable Organization Endowments

As of August 1, 2010

Our Charitable Organization Endowment (COE) Program is the largest of its type in the United States. The program includes 300 organizations that depend upon annual distributions to help them meet a variety of needs. As of June 30, 2010, the market value of the program was \$124.7 million and distributions for the year exceeded \$5.2 million. Please note that many organizations have both a main endowment as well as sub endowment funds established for specific purposes. For more information on the organizations, please visit Central Oklahoma Charities at www.occf.org.

Arts & Cultural Organizations

Allied Arts Foundation Affiliated Fund
Ambassadors' Concert Choir
American Banjo Museum
American Choral Directors Association
Arts Council of Oklahoma City
Canterbury Choral Society
Chamber Music in Oklahoma
-Berrien Kinnard Upshaw Fund
Cimarron Circuit Opera Company
City Arts Center
Fine Arts Institute of Edmond
Guy Fraser Harrison Academy for the Performing Arts
Individual Artists of Oklahoma/
Linda Jaeger Memorial
International Photography
Hall of Fame & Museum
Jacobson Foundation
Jazz in June
Ladies Music Club of Oklahoma City
Lyric Theatre of Oklahoma
-Curt Schwartz Scholarship
Melton Art Reference Library
-Melton Scholarship Fund
Jasmine Moran Children's Museum
National Cowboy & Western Heritage Museum
Affiliated Fund
National Cowboy & Western Heritage
Museum/Docent Council
OK Chorale
Oklahoma Arts Institute
Oklahoma Children's Theatre
Oklahoma City Ballet
Oklahoma City Museum of Art Affiliated Fund
- Fee-Milligan Endowment
- Carolyn A. Hill Collections Fund
- James C. & Virginia W. Meade
Collections Fund
- Robert & Harriet Orbach Fund

Oklahoma City Orchestra League
Oklahoma Community Theatre Association
-Lil Williams Festival
Oklahoma Museums Association
Oklahoma Philharmonic Affiliated Fund
- J. Landis Fleming Fund
- Fund for Collaborative Performances
Oklahoma Shakespeare in the Park
Oklahoma Visual Arts Coalition
Paseo Artists Association
Photographic Society of America ■
Prairie Dance Theatre
Red Earth
-Kathleen Upshaw Fund
Science Museum Oklahoma
(Kirkpatrick Center, Oklahoma Air & Space
Museum, Omniplex)

Community Development Organizations

Association of Fundraising Professionals
Cimarron Alliance Foundation
Crimestoppers of Oklahoma City
Executive Service Corps of Central Oklahoma
Executive Women International
Impact Oklahoma
Jewish Federation of Greater Oklahoma City
-Ralph Dorn Fund
Junior Hospitality Club
Junior League of Oklahoma City
Kiwanis Club Special Activities
L'Alliance Francaise d'Oklahoma
Leadership Oklahoma City Affiliated Fund
League of Women Voters of Oklahoma
Midwest City Rotary Foundation
National Society of Colonial Dames of America
in Oklahoma
Navy League for USS Oklahoma City/
E6-A Squadron

What is a COE?

A charitable organization endowment (COE) is a permanent fund that generates annual income for a charitable organization. Our investment and distribution policies take into consideration that these funds need to provide income to the organizations for years to come.

Why Establish a COE?

Our COE Program provides four key elements for an organization to further secure its long-term viability:

1. A single endowment fund into which many donors can contribute at any time to further establish and build permanent support. We accept many types of marketable assets as charitable gifts to the endowment including on-line gifts through www.occf.org.
2. A COE provides an annual cash distribution that allows staff to rely upon a steady and predictable income stream.
3. Our long-term investment strategies and efficient management of the funds provides for the future financial needs of the organization. Endowment funds are pooled so small funds receive the same investment returns and management services as larger funds.
4. We serve as a partner with each charitable organization, its staff and board of directors to help build the endowment through planned giving services, training and educational workshops.

What is Required to Establish a COE Fund?

Any 501(c)(3) public charity organization approved by the Trustees may establish an endowment fund with us. An endowment can be started with a \$20,000 contribution from the organization itself or from a donor or group of donors.

The Ninety-Nines
99s Museum of Women Pilots
Oklahoma Center for Nonprofits
Oklahoma City All Sports Scholarship Relief Fund
Oklahoma City Boathouse Foundation
Oklahoma City Foundation for Architecture
Oklahoma County Bar Foundation
Oklahoma Lions Service Foundation

Redbud Foundation
Rotary Club 29 Foundation
Jim Thorpe Association ■
Women of the South

Education: Colleges, Universities & Vocational Schools

Hillel Foundation/University of Oklahoma
- Louis Berlowitz Lodge
- B'nai B'rith Milton J. Gordon Memorial
- John Horwitz Memorial Library
Langston University
- Rachel Starks Durham Scholarship
- Helen Aline Johnson Scholarship
- Kirkpatrick Scholarship
- Al Bert Prewitt Sr. & Audrey Monroe Prewitt Endowment
- Baxter L. Tilford Scholarship
Oklahoma Baptist University
- Business Program
- Hobbs Lectureship
- James Hurley Professorship
- Scholarships
Oklahoma Christian University
- McBride Center for Faith & Literature Organization
Oklahoma City Community College
Oklahoma City University
- Benham Professorship
- Film Institute
- Fine Arts Department
- Law School Dean's Fund
- Law School Seminar Fund
- Petree School of Music Fund
- Societies Fund
Oklahoma State University/School of Civil & Environmental Engineering
Oklahoma State University - Oklahoma City
- Horticulture Center
- Rumsey Garden
- Diane Miller Greenhouse Scholarship
Opportunities Industrialization Center
Redlands Community College
- Black Baseball Endowed Fund
- Burrus Family Scholarship
- Casey Dell Brantley Scholarship
- Michael Earl Cray Scholarship
- El Reno Chamber of Commerce/ Leslie F. Roblyer Memorial Scholarship
- El Reno Masonic Lodge #50/ RCC Aggie Club Endowed Scholarship

-Scott L. Harlan Memorial Endowed Scholarship
- Howard and Rebecca Rainey Hutson Scholarship
- Cathi Kennedy Scholarship
- KLR Scholarship
- Tyler Knecht Memorial Endowed Scholarship
- Marie West Lyons Scholarship
- Tommy Pinkston Family Memorial Scholarship
- Martha Piper Nursing Scholarship
- Cheryl Ross Rinehart Memorial Nursing Scholarship
- Renna V. Roysse Scholarship
- Virdin Roysse Memorial Endowed Scholarship
- James Shaw Scholarship
- Trotter-Gambel Scholarship
Southern Nazarene University Scholarship
St. Gregory's University
- Vogt Fund
- Scholarships for Women
Francis Tuttle Foundation
United States Air Force Academy/John E. Kirkpatrick Fund
United States Military Academy/John E. Kirkpatrick Fund
United States Naval Academy/John E. Kirkpatrick Fund
University of Central Oklahoma
- Fine Arts Fund
- Kirkpatrick Service Awards
- Nursing Scholarship
University of Central Oklahoma Department of History and Geography/ Diane Neal Kremm Fund
University of Oklahoma Health Sciences Center
- Robert M. Bird Society
- Medical College Alumni Association Research Fund
- Watson Scholarship
University of Oklahoma Norman Campus
- Bizzell Memorial Library
- Jerry Cooper Marching Band Scholarship
- Fred Jones Jr. Museum of Art
- Naval ROTC

Education: Community Organizations

Friends of Libraries in Oklahoma
Friends of the Metropolitan Library System
Friends of the Mustang Public Library

Friends of the Norman Public Library
Institute of International Education
-Alice Pratt Internship Fund
-Colin and Brooke Lee Fund
Library Endowment Trust
Oklahoma City Literacy Council
Oklahoma Humanities Council
Oklahomans for Special Library Services
Payne Education Center

Education: Preschool-12th Grade

Calumet School Foundation
Casady School
- Carolyn Young Hodnett Scholarship
- Eleanor Kirkpatrick Fine Arts Chair
-John E. Kirkpatrick Fund
-Jane B. McMillin Memorial
-Records Family Scholarship
-Scholarships
Celebrations Preschool
Christ the King Catholic School
- James C. & Virginia W. Meade Fund
Christian Heritage Academy
Crescent Public Schools Foundation
Deer Creek Affiliated Fund
Edmond Public Schools Foundation
- Eloise Rodkey Rees Inspirational Essay Award
- Rees Fund
El Reno Public School Foundation
- Wilbur and Jean Gardner Scholarship
Guthrie Educational Foundation
Heritage Hall Affiliated Fund
- Landscaping Fund
- Reynolds Endowment
- Teacher Endowment
Erna Krouch Preschool
Markoma Christian Ministries
Bishop McGuinness Catholic High School
Midwest City-Del City Public Schools Foundation
Millwood School District Enrichment Foundation
Moore Public Schools Foundation for Academic Excellence
Mount St. Mary High School
- Tom Swyden Fund
Oklahoma Christian School
Oklahoma City Public Schools Foundation
Oklahoma FFA Foundation

Oklahoma Foundation for Excellence
 Oklahoma School of Science and Mathematics
 Positive Tomorrows
 Putnam City Public Schools Foundation
 Rosary Catholic School
 Sacred Heart Catholic School
 Special Care
 St. Charles Borromeo Catholic School
 St. Elizabeth Ann Seton Catholic School
 St. James Catholic School
 St. John Christian Heritage Academy
 - Waltine Lynette Jackson Endowment
 St. John's Episcopal School
 - Calvin and Peola Battle Scholarship
 - Edward Wade Dalton Memorial
 - Sherry Rowan Scholarship
 St. Mary's Episcopal School of Edmond
 Trinity School
 Villa Teresa School
 Westminster School
 - Gregory L. Shadid Memorial Scholarship

Education: Scholarship and Support Organizations

Beta Eta Lambda Scholarship Foundation of Alpha Phi Alpha
 Kimberly Kay Clark Naval Reserve Association Scholarship
 Moore High School Alumni Association
 - George & Doral Hopper Scholarship
 - Bennie Raine Scholarship
 Muskogee Public Schools Adult Day Camp Scholarship
 Oklahoma Engineering Foundation Scholarship
 Oklahoma Pilots Association Vic Jackson Scholarship
 A. Kurt Weiss Lectureship
 Marie Welch IIAO Scholarship

Environment & Animals Organizations

Best Friends of Pets
 Choctaw Parks Foundation - Historical Sculpture Gardens Perpetual Care
 Free to Live
 Friends of Martin Park Nature Center
 Morris Animal Foundation
 Myriad Gardens Foundation

The Nature Conservancy/Oklahoma Chapter
 - James K. Hotchkiss Fund
 Oklahoma City Beautiful
 - Morrison Tucker Award
 - Wildflowers Fund
 Oklahoma City Geological Foundation
 Oklahoma Horticultural Society
 Oklahoma Iris Society ■
 Oklahoma River Foundation
 Oklahoma Zoological Society
 The Tree Bank

Health-Related Organizations

Alzheimer's Association/Oklahoma & Arkansas Chapter
 American Cancer Society
 American Diabetes Association
 American Lung Association of Oklahoma
 Arthritis Foundation/Oklahoma Chapter
 Cavett Kids Foundation
 The Children's Center
 - Foundation Fund
 Children's Hospital Foundation
 Community Health Center/Mary Mahoney Memorial Health Center
 Epilepsy Association of Oklahoma
 Integris Baptist Medical Center
 - Baptist Burn Center
 - James L. Hall Jr. Center for Mind, Body & Spirit
 Integris Southwest Medical Center
 The Leukemia & Lymphoma Society
 Lupus Foundation of America/Oklahoma Chapter
 Dean A. McGee Eye Institute
 Mercy Health Center
 National Multiple Sclerosis/Oklahoma Chapter
 Oklahaven Children's Chiropractic Center
 Oklahoma Blood Institute
 Oklahoma Brain Tumor Foundation
 Oklahoma Medical Research Foundation
 - Fleming Scholarship
 - D. Allan & Dorothy B. Harmon Memorial
 - Research Fund
 Oklahoma Physical Therapy Foundation
 Oklahoma Safe Kids Coalition
 Planned Parenthood of Central Oklahoma
 - Cleo Cross Fund
 Prevent Blindness Oklahoma

Referral Center for Alcohol and Drug Services
 Russell-Murray Hospice
 St. Anthony Hospital Foundation
 United Cerebral Palsy
 Variety Care

History & Preservation Organizations

45th Infantry Division Museum
 95th Division Foundation
 Arcadia Historical & Preservation Society
 Break O'Day Farm and Metcalfe Museum
 Cleveland County Historical Society
 Edmond Historical Society
 Friends of Oklahoma Historical Society Archives
 William Fremont Harn Gardens and Homestead
 - 1889er's Fund
 Frontier Country Historical Society
 Oklahoma Archaeological Survey
 Oklahoma City-County Historical Society
 Oklahoma Heritage Association
 - Gary & Elizabeth Huckabay Scholarship
 - Scholarship Fund
 Oklahoma Historical Society/Guthrie Carnegie Library Fund
 Oklahoma Historical Society/Cross S Ranch Fund
 Oklahoma Historical Society/Oklahoma History Center
 - Emily Bell Fund
 - Nahzi & Annette Zudhi Fund
 Oklahoma Railway Museum
 Oklahoma State Firefighters' Museum
 Oklahoma Westerners Indian Territory Posse
 Overholser Mansion
 - Dianne Gumerson Memorial
 Preservation Oklahoma
 Stillwater Museum Association/Sheerar Museum
 Westerners International

Neighborhood Associations

Capitol View Neighborhood Association
 Crown Heights-Edgemere Heights Neighborhood Association
 Edgemere Park Preservation Area
 Historic Brookhaven Neighborhood Association
 Mesta Park Neighborhood Association

Continued on next page

Neighborhood Alliance of Oklahoma City
Oklahoma City Housing Services
Redevelopment Corp. - Positively Paseo
Putnam Heights Preservation Area - Anderson
Family Endowment
Shartel Boulevard Development Authority

Religious Organizations

4HIM - His Healing Helping Hands
International Ministries
All Souls' Episcopal Church
- Music Fund
LifeChurch.tv
St. Paul's Episcopal Cathedral ■
Sisterhood of Temple B'nai Israel
- Seligson Flower Fund
Sisters of Benedict
Temple B'nai Israel Centennial Fund

Senior Adult Service Organizations

Areawide Aging Agency
Baptist Retirement Center
Daily Living Centers
Edmond Senior Community Foundation
Foundation for Senior Citizens
Oklahoma Alliance on Aging
Oklahoma County Senior Nutrition Program
RSVP - Retired & Senior Volunteer Program of
Central Oklahoma

Social Services Organizations

Aid for Individual Development
American Red Cross of Central Oklahoma
A Chance to Change
CARE - Child Abuse Response
and Evaluation Center
CASA of Oklahoma County
Catalyst Behavioral Services
Catholic Charities of the Archdiocese of
Oklahoma City
Center for Children and Families Inc. ■
Central Oklahoma Association for the Deaf &
Hard of Hearing
Citizens Caring for Children
City Rescue Mission
Coffee Creek Riding Center
Consumer Credit Counseling Services of
Central Oklahoma
Deaconess Home/Pregnancy and Adoption
Services
Easter Seals of Oklahoma

EARC - Employment & Residential Centers
Exchange Club Center or the Prevention of
Child Abuse
Firststep - OKC Metro Alliance
Genesis Project
Goodwill Industries of Central Oklahoma
Heartline
Hope Center of Edmond
Infant Crisis Services
Jesus House
Legal Aid Services of Oklahoma
- Stan Foster Senior Law
- Judge Eugene Mathews Fund
Limbs for Life Foundation ■
Make-A-Wish Foundation of Oklahoma
Make Promises Happen/Central Oklahoma
Christian Camp
McCall's Communities for Life Enrichment
Meadows Center for Opportunity
Mental Health Association of Central
Oklahoma
NAIC - Center for Oklahoma Alcohol and Drug
Services
Neighbor for Neighbor of Oklahoma City
Neighborhood Services Organization
New View Oklahoma
Oklahoma Baptist Homes for Children
Oklahoma Foundation for the Disabled
Oklahoma Foundation for the Education of
Blind Children & Youth
Oklahoma Halfway House
Oklahoma Lawyers for Children
Peppers Ranch
Rainbow Fleet
Rebuilding Together
Regional Food Bank of Oklahoma
Reliant Living Centers of Oklahoma
Dale Rogers Training Center
SAFY - Specialized Alternatives
for Families & Youth
The Salvation Army
- Ed Leslie Fund
Scope Ministries International
Skyline Urban Ministry
Special Olympics Oklahoma
Speck Homes
Sunbeam Family Services
TEEM - The Educational and
Employment Ministry
United Methodist Boys Ranch

United Way of Central Oklahoma
Upward Transitions
Urban League of Greater Oklahoma City
Urban Mission
Willow Springs Boys Ranch
Work Activity Center
World Neighbors
Youth Services for Oklahoma County
YWCA of Oklahoma City

Youth-Serving Organizations

Big Brothers Big Sisters
of Greater Oklahoma City
Boy Scouts of America - Last Frontier Council
Boys & Girls Club of Oklahoma County
Camp Fire USA - Heart of Oklahoma Council
Chesapeake Swim Club
Denny Price Family YMCA of Enid
Fellowship of Christian Athletes
- Stephen B. Payne FCA Scholarship
Girl Scouts - Western Oklahoma
Junior Achievement of Greater Oklahoma City
Oklahoma City Police Athletic League
Salvation Army Boys and Girls Club of
Oklahoma City
Whiz Kids/City Care
YMCA - Oklahoma City
- Camp Classen
- Camp Classen Eberly Scholarships
- Downtown
- Eastside
- Northside
Youth Leadership Exchange

COE Program Services Provide Added Value

The Oklahoma City Community Foundation is the metropolitan area's specialist for endowment fund management and the leading advocate for endowment development. In addition to having investment, distribution and administrative policies that are appropriate for long-term endowment growth, we also offer services and resources through our COE Program that go beyond the administration of the endowment funds. It is our objective to provide opportunities for the nonprofit organizations to become more sustainable both now and for the future. The services and resources outlined below add immense value to an organization's participation in the program.

New Grants Program

In the spring of 2010, we asked the COEs via an online survey what would most help them become more sustainable organizations. The overwhelming response along with input from the Community Programs Committee provided the information necessary to revamp our grants program. We now offer two grant opportunities: Basic Operational Grants and Sustainable Organization Support (SOS) Grants. Through Basic Operational Grants, we offer up to \$3,000 to COEs to help fund first-time needs such as strategic plans, audits, basic management or development consulting or training for board and staff. SOS Grants will provide up to \$15,000 to help generate a fundamental improvement in the structure, systems or strategies that leads to a more stable and effective organization. More information is available at www.occf.org/coeprogram.

Lunch for 2

In partnership with Cole & Reed, P.C., we offer Lunch for 2, a quarterly series of lunchtime workshops for certified public accountants who work for or with the COEs. The workshops are free and provide two hours of continuing education credit for the attendees.



Development and Communications

We help organizations encourage gifts to their endowments through publications and our website. Our staff works directly with a COE's staff and board of directors to develop a giving program to further enhance their endowment. In addition to the annual COE Report, we also publish an Annual Report that is distributed to all donors, potential donors and community leaders and lists all beneficiary organizations participating in the COE program. We also provide COEnews, an electronic monthly newsletter sent to each COE that provides useful summaries of articles and resources for charitable organizations.

www.OCCF.org

Our website offers several key features that benefit the COE:

In 2010, we added a new resource to the website just for COEs. The COE Toolkit provides resources to help the COEs promote and develop their endowment funds and stay informed on the latest nonprofit issues.



Central Oklahoma Charities is the area's most up-to-date searchable online nonprofit resource directory. Each COE is included in both an alphabetical listing as well as a categorical index and each listing includes all contact information, a description of services and a link to the organization's website and e-mail. Donors can also make gifts with credit cards directly to a COE fund via our secure online giving service.

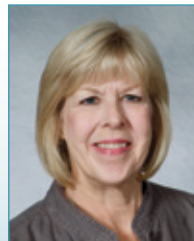
DonorCentral is a secure online reporting service made available to representatives of each charitable organization endowment. DonorCentral allows the staff and board of directors to view current fund balances, financial statements and gift history online.

Our secure online giving service offers donors the ease of using a VISA, MasterCard or American Express to make a gift to any of the COEs. A link for online gifts is listed on each of the COE web pages in Central Oklahoma Charities.

Legacy Giving is the planned giving section and is a great resource for COEs and their donors. For more information see page 9.

Charitable Organization Endowment Program Notebooks

A customized Charitable Organization Endowment Program Notebook is provided to each COE and contains historical information on gifts and grants, policies governing the fund, the fund agreement, a copy of the first four custom pages of the fund report and details about services we provide.



For more information about the COE Program, please contact Gayle Farley at 405/606-2910 or g.farley@occf.org.

Detailed information is also available at www.occf.org/coeprogram.

Support these organizations with a gift

All of the COE organizations serve an important role within our community and their endowments help to sustain their long-term viability. You can further help these organizations through a charitable gift to their fund through the options outlined below. As a 501(c)(3) public charity, gifts made to endowment funds at the Oklahoma City Community Foundation receive the maximum tax benefits allowed. We provide you with the proper tax receipt documenting your charitable gift.

Online Gifts: We offer a secure online giving service that accepts gifts to permanent endowments from donors using an American Express, MasterCard or Visa credit card. For many donors, online giving is a easy and convenient way to make a charitable gift at any time. To make an online gift, please visit www.occf.org/donate.

Cash: Cash is one of the easiest ways to make a charitable contribution. A cash contribution to a charitable organization endowment can be in the form of cash, check, money order or a cashier's check. You can mail a cash contribution to the Oklahoma City Community Foundation, for benefit of (list organization's name), P.O. Box 1146, Oklahoma City, OK 73101-1146.

Real Estate: Real estate may be given at appraised value. If appreciated, long-term capital gains tax may be avoided on the real estate appreciation if the property is contributed directly to the Oklahoma City Community Foundation. Gifting real estate may allow you to preserve liquid assets while maximizing your charitable contributions.

Business-related Assets: We are able to accept gifts of individually-owned business assets such as closely-held C-corp. and S-corp. stock, partnerships and LLCs.

Stocks, Bonds and Mutual Funds: If appreciated, marketable or closely-held securities such as stocks, bonds and mutual funds can offer you significant tax savings while maximizing your charitable contributions. The securities may be given so that you receive an income tax deduction equal to the fair market value of the donated assets while avoiding the long-term capital gains tax. We maintain accounts at most brokerage firms and can arrange for the transfer of the donated securities.

Oil and Gas Interests & Royalty Interests: Both oil and gas royalty interests may also be donated to the Oklahoma City Community Foundation for the benefit of a charitable organization endowment. The contribution of oil and gas interests may allow for the preservation of liquid assets while maximizing the charitable contributions.

Life Insurance: Life insurance can be an effective means to fund a charitable gift without significant outlays of cash. Simply designate one or more charitable organization endowment as the beneficiary.



Brooks, Allen, David and Jacque Wright.

Supporting Youth Organizations

For Allen and Jacque Wright, Oklahoma has always been home. They both attended the University of Oklahoma and met in 1984 while serving as interns for U.S. Senator Don Nickles in Washington, D.C. After graduating from college in 1985 they were married a year later and made their home in Oklahoma City.

Allen spent the next 12 years working in public service as a staff member for various elected officials including Gov. Henry Bellmon and U.S. Rep. Frank Lucas, and Jacque was active in her family's commercial real estate business. In 1998, Allen began working for Koch Industries as the director of public affairs, a position that would eventually move the couple out of their home state to Wichita, Kan.

While living out of state, the Wrights wanted to find a way to continue to support the causes they cared about at home, and were able to do so through their gifts to the Oklahoma City Community Foundation.

"We can think of no other way to support so many worthy charities in the Oklahoma City area," says Jacque.

Since 1996, the couple has supported a number of nonprofit organizations including the United Methodist Boys Ranch, Willow Springs Boys Ranch, Positive Tomorrows and The Children's Center.

"Raising two boys, we have a passion for helping youth and young boys in particular," says Allen. "We are keenly aware of the unique needs of young people and it's our desire to support groups that serve those needs."

In 2009, the couple was happy to move back to Oklahoma and Allen currently serves as the director of public affairs and employee engagement for Devon Energy. They continue to support numerous youth-oriented organizations through the Oklahoma City Community Foundation.

Consider an Estate Gift to Benefit a COE

Including a charitable gift to benefit a COE in your estate plans is an easy and effective giving option. A portion of our website is devoted to planned giving. At www.occflegacy.org you will find important resources for both you and your professional advisor to create charitable giving plans that work for you and benefit your favorite charitable organization. In addition, there is a philanthropic calculator that can help determine the tax implications of certain gifts such as charitable gift annuities and charitable trusts.

What is an Estate or Planned Gift?

An estate or planned gift (also referred to as a deferred gift) describes any charitable gift that is made as part of your tax or estate plan. This type of gift may provide for an income benefit for you or can provide a tax deduction exceeding a single year. At the Oklahoma City Community Foundation, we recognize that planned giving needs vary from donor to donor and that is why we provide the options outlined on this page.

If you are considering a planned gift, we encourage you to discuss the topic with your professional advisor. For more information on how we can work with you, please contact Joe Carter at 405/606-2914 or j.carter@occf.org



Joe Carter

Charitable Gift Annuities

A charitable gift annuity (CGA) provides individuals 55 years or older with not only income for life but also the peace of mind of making a difference through a lasting gift to the community. Through a CGA, you can make a gift with cash or other assets of at least \$20,000, receive income for life and, at the end of the annuity, the remaining assets will go to the charitable fund or funds of your choosing. We offer six CGA options.

Charitable Remainder Trusts

A charitable remainder trust allows you to place assets in a trust that pays annual income to you or a beneficiary for life or a term of years. You can avoid capital gains tax on the donated assets and also receive an income tax deduction for the fair market value of the remainder interest of the trust. In addition, the trust is removed from the estate, reducing subsequent estate taxes. Upon the trust's termination, the remaining assets will benefit an existing endowment or advised fund.

Charitable Lead Trusts

A charitable lead trust allows you to transfer assets to the Oklahoma City Community Foundation that then pays a percentage of the assets' value to an endowment you've

Rick Kells

Rick Kells practiced what he preached. A well-respected tax attorney and CPA in Oklahoma City, Rick was a frequent donor to the Oklahoma City Community Foundation. He would contribute appreciated stock to his fund then recommend grants to his favorite nonprofit organizations. Rick clearly understood that he could relieve his tax burden on appreciated securities while at the same time benefitting the community he cared about. He believed it was a practical and convenient way to make charitable contributions.



For more than 30 years, Rick practiced in the areas of federal and state taxation, wealth transfer planning, wills, trusts and estates as well as tax controversies. A 1977 graduate of the Oklahoma City University School of Law, Rick had taught law and accountancy at his alma mater. Most recently he was a partner with the firm Hartzog Conger Cason & Neville P.C. He was known for an insatiable thirst for knowledge and a selfless willingness to share his expertise with others. Just weeks before his death in March 2010, Rick was named the 2009 Outstanding Oklahoma Tax Lawyer by the Law Section of the Oklahoma Bar Association.

It came as no surprise to anyone who knew Rick to learn that he had bequeathed the assets of an individual retirement account (IRA) to the Oklahoma City Community Foundation to benefit the OCU School of Law. It is truly fitting that the Richard Kells Memorial Scholarship will reward deserving OCU law students for years to come.

designated. At the end of the trust term, the remaining assets are passed on to designated heirs. Charitable lead trusts offer several advantages including greatly discounted gift or estate taxes and any growth in the assets will be free of these taxes for the heirs. In certain cases, a charitable lead trust may also provide an income tax deduction at the time the trust is created.

Retirement Plan Assets

Retirement plan assets are subject not only to estate taxes, but also income taxes. To reduce this burden on heirs and to create a charitable legacy, you can use any retirement plan asset to maximize charitable contributions by establishing an Advised Fund at the Oklahoma City Community Foundation. Your heirs can serve as advisors to the fund, ensuring that your charitable interests are continued into the future.

Bequests

With a bequest, you can designate a percentage, the residual or their entire estate to benefit an existing fund or to establish a new fund. This option may provide you and your family with substantial reductions in federal estate taxes. We offer sample bequest language at www.occf.org.

A Summary of our Investment and Distribution Policies

For 41 years, the Oklahoma City Community Foundation has been the metropolitan area's leading advocate for building endowment funds. The low cost and efficient operation of our investment program benefits all endowments, large and small. We accomplish this by balancing the use of active managers and index funds in a way that maximizes the opportunity for adding value but keeps the cost low. As a result, we have been able to produce annualized returns over 10 years that exceed the markets but at a cost which is much lower than mutual funds or other balanced fund alternatives.

Our investment policy is designed for an endowment fund to provide annual distributions for charitable purposes in perpetuity. The investments need to allow the fund to generate distributions, grow to accommodate inflation and continue to exist in the future.

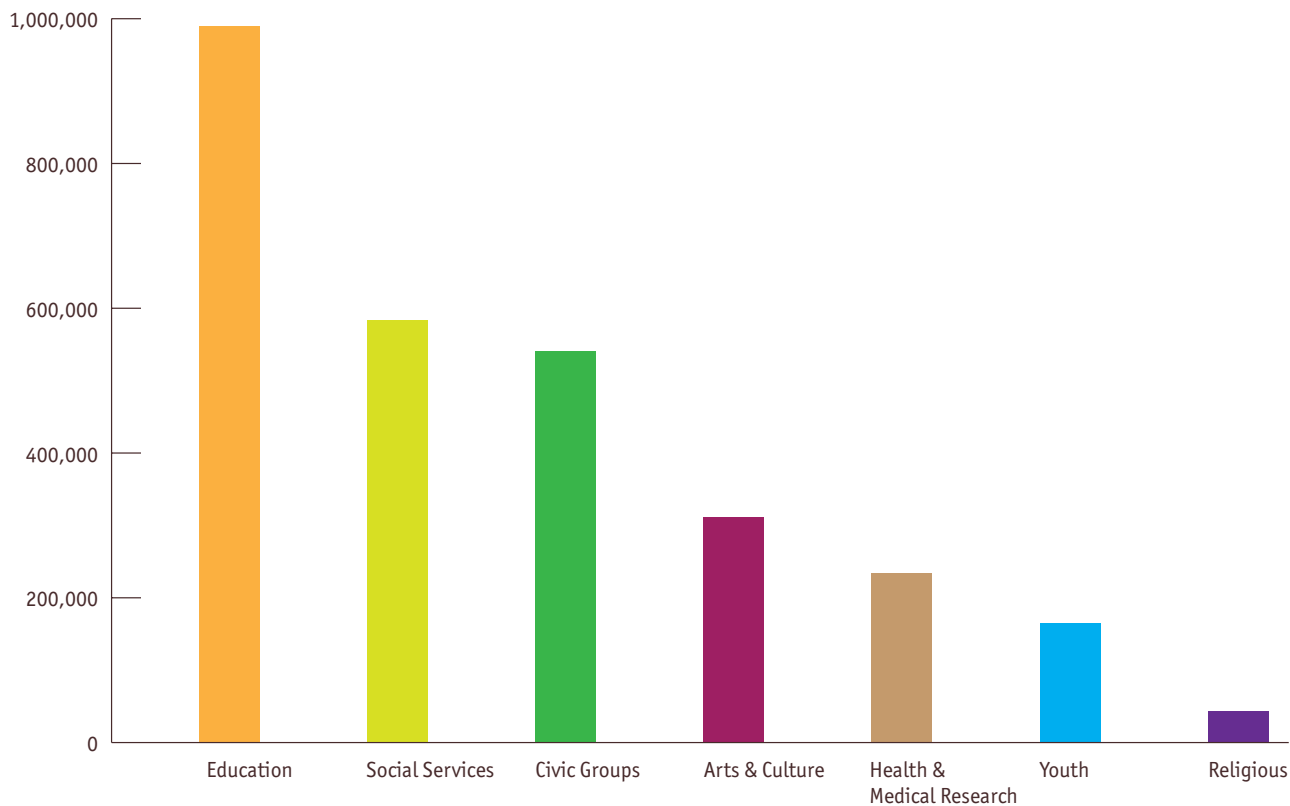
The Trustees have adopted an investment policy that has four major objectives: capital preservation; inflation protection; continuing source of annual distribution for charitable purposes; and investment return in the top third of professionally managed funds. Our Investment Committee uses a style-based investor management system and allocates assets to specific investment styles. The committee hires investment managers to manage a particular style.

As endowment fund investors we have a perpetual horizon. Because of this horizon, we maintain a disciplined approach to long-term investment strategy while utilizing short-term tactical allocations to add value when there is opportunity. We also remain committed to a long-term diversification strategy with an allocation to high quality fixed-income assets even in times of booming equity investments. In addition, our prudent distribution policies provide a structured method of making distributions from an endowment that protects the stream from inflation thus creating a predictable annual distribution and allows the Investment Committee to focus on maximizing total investment return.

Since 1989, we have employed a distribution policy that permits endowments to capitalize on good investment years as well as protect them in low or negative return markets. Cash distributions from most of the endowment funds we administer are based upon a spending policy that calls for distributing 5 percent of the fund's average market value. The remaining investment return is left in the fund to increase the value. The annual distribution amount is based upon a rolling quarter average of the fund's market value. Effective FY2011 we will increase the number of quarters from eight to 12 thus further protecting the distribution from market fluctuations.

COE Distributions by Program

For FY2010, the COE Program will distribute \$5.29 million to the 300 participating organizations. The chart illustrates the distributions according to program area.



Our Investment Management Process

Our Investment Committee begins the process by determining the percentage of assets to be allocated between equities, fixed income securities and cash.

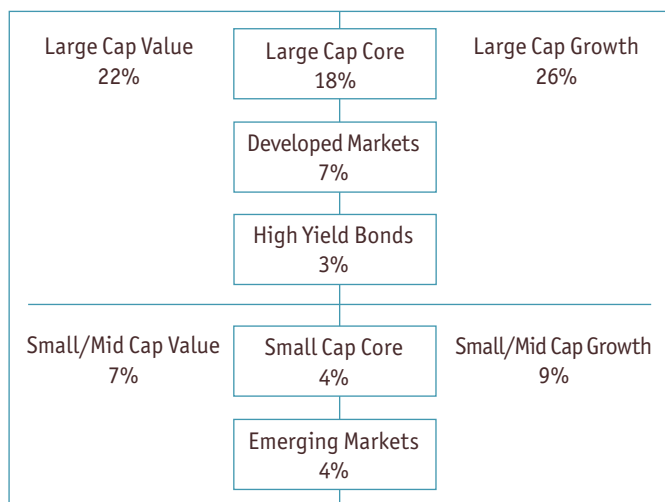
Step 1

Asset Allocation Targets for the General Investment Pool as of June 30, 2010

	Target	Range
Equity	62.5%	40–70%
Fixed Income	34.5%	30–60%
Cash	3.0%	0–10%

Step 2

Next, the committee determines the equity allocation among the various styles of equity management.



Step 3

Once allocation is decided, the committee selects the style-specific equity managers. Their performance is evaluated against the appropriate benchmark for their particular sector. They are also evaluated as to their adherence to the specific style they have been engaged to manage.

Investment Managers

Equity

Large Cap Value

Wedge Capital Management, *Charlotte, N.C.*

Small Cap Value

Earnest Partners, *Atlanta, Ga.*

Small/Mid Cap Growth

Columbus Circle Investors, *Stamford, Conn.*

Small Cap Core

Kalmare Investments, *Wilmington, Del.*

High Yield Bonds

Wells Capital Management, *San Francisco, Calif.*

International

Aberdeen Asset Management, *Philadelphia, Pa.*

Fixed Income

JP Morgan Chase Asset Management, *Columbus, Ohio & Oklahoma City*

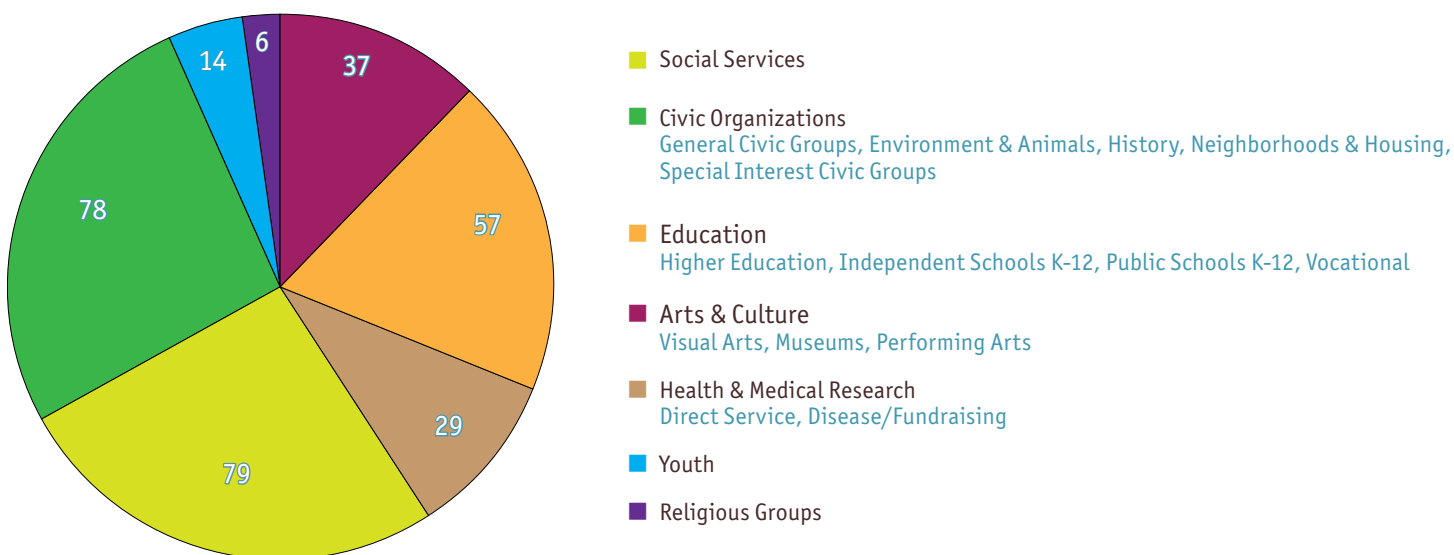
Bank of Oklahoma, *Oklahoma City*

We also use a group of index funds which provides some additional diversification within each sector.

General Pool Total Return	Year Ended June 30, 2010	Three Years Ended June 30, 2010	Five Years Ended June 30, 2010	Ten Years Ended June 30, 2010
Oklahoma City Community Foundation	12.99%	-2.26%	2.54%	2.78%
65% S&P 500/35% Barclays Capital G/C Int	12.28%	-3.60%	1.75%	1.48%

COEs by Program Area As of 6/30/2010

Our COE Program is comprised of 300 nonprofit organizations that provide valuable benefits and services to our community.





OKLAHOMA CITY
COMMUNITY FOUNDATION

Helping you help the community

P.O. BOX 1146 73101-1146
1000 N. BROADWAY AVE.
OKLAHOMA CITY, OK 73102



NON-PROFIT ORG.
U.S. POSTAGE
PAID
OKLAHOMA CITY, OK
PERMIT NO. 255



Confirmed in Compliance with National
Standards for U.S. Community Foundations



This report is printed on Accent Opaque which contains a minimum of 10% postconsumer waste.

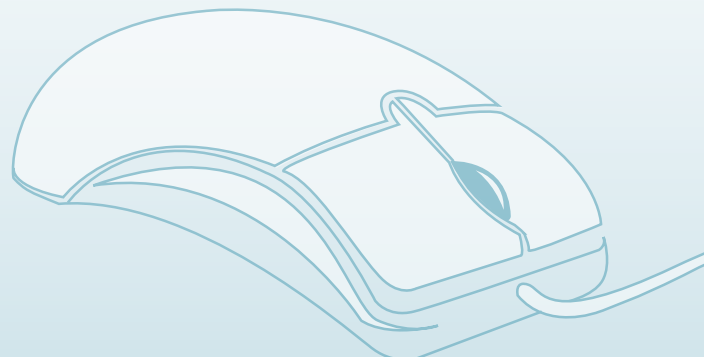
Online Service Simplifies Giving for Donors

Donors can make a charitable gift to any of the COEs administered by the Oklahoma City Community Foundation through our secure online giving service. This convenient service allows donors to make a gift at anytime to the endowment fund of their choice with their Visa, MasterCard or American Express credit card. Once the gift is processed, donors receive an e-mail confirmation and tax deduction notice of their gift.

Online donors Trent and Heather Wells utilize our online giving service to make a monthly charitable gift to the Center for Children and Families, Inc. Hope for Children Endowment.

"In today's world where paper checks are becoming virtually nonexistent, your online giving service makes giving that much easier," says Trent Wells.

For more information and step-by-step instructions on how to make an online gift visit www.occf.org/onlinegiving. The process is easy, convenient and available 24/7!



Board of Trustees

Steve Mason, President

Mary Ann Bauman M.D.**

James Clark

Nancy L. Coats

James Daniel

Steven C. Davis

Paul W. Dudman*

John Green*

Kirkland Hall

Leslie Hudson

Oscar Jackson**

Jane Jayroe

Judy Love

Harry Merson

J. Larry Nichols

Bond Payne

Tony J. Tyler

Christian K. Keesee

Ex-Officio

John E. Kirkpatrick
(1908-2006)

Founding Trustee

* Term expired June 30, 2010

** Term began July 1, 2010